

Please use this guide to assist you with assessing your partitions and industrial wall requirements. Shown on the following pages are:

Partition Modules (Page 2)

These pages show the different elevations available for the different partition types. These are useful to help you decide on the type of partition you need and how you would like it to look.

If possible, please mark your drawing with the details of the modules so we have a clear idea of what you are looking for when we price up your requirements.

Create Your Layout Here (Page 3)

Print this page (multiple times if you like) and draw on your layout for the partitions that you would like us to look at for you. Mark up these pages with the dimensions and show any other points worth considering as shown in the following pages.

Sample Layout (Page 4)

A sample of things worth noting on the drawing of your requirements.

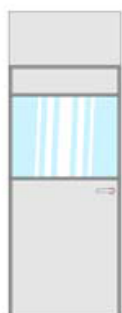
Information / Things To Be Aware Of (Page 5)

Here you will find help with dimensions, and notes on other points worth considering, well worth reading prior to creating your layout. Also included here are the standard colours for the steel partitions that we offer.

SINGLE / DOOR MODULES



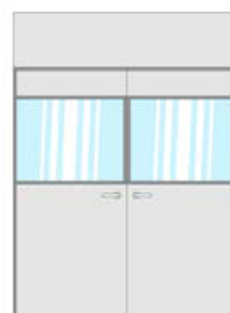
SOLID



GLAZED DOOR

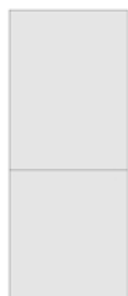


DOUBLE DOOR - SOLID

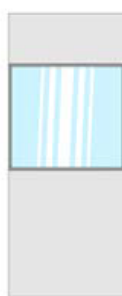


DOUBLE DOOR - GLAZED

SINGLE / DOOR MODULES



SOLID



GLAZED



PART MESH



HALF MESH



FULL MESH

Above shows the different modules available for the steel partitions (single, double and mesh), as standard these are a 1000mm module width and are available in a variety of different heights.

Single door modules are 1000mm as standard.

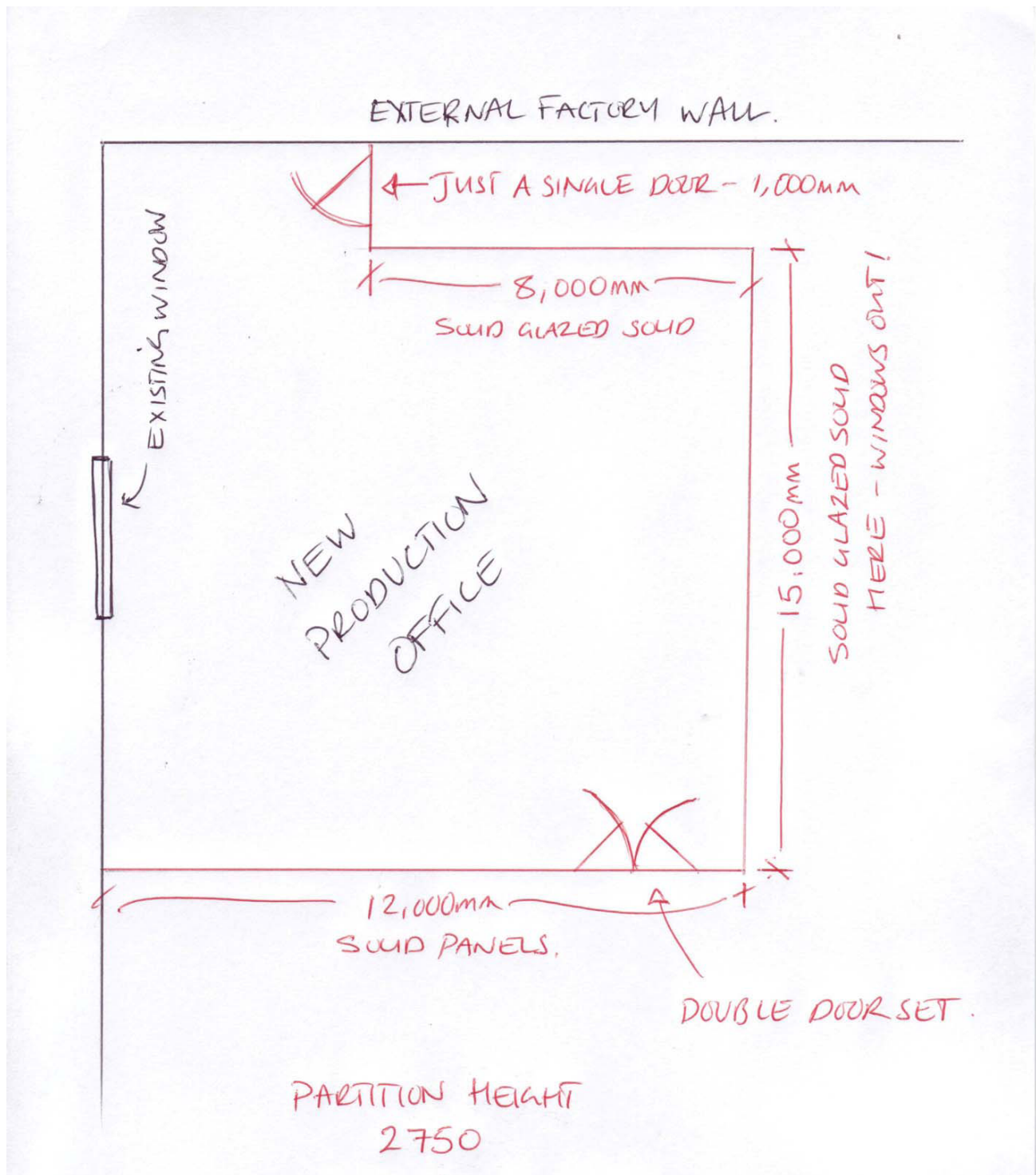
Double door modules are 1940mm as standard.

Create your drawing here, scan it onto your PC and then email us using sales@aci.uk.net.



For tips on creating your drawing, please see the next page.

This is an example of a sample drawing that would allow us to quote the works for you.



If you have any more questions about drawing, drop us an email at sales@aci.uk.net.

Dimensions:

Where possible, please mark down all dimensions in mm. To help you with this, the conversions are shown below:

To convert inches to mm x 25.4 - e.g. 1 inch = 25.4 mm

To convert feet to mm = 304.8 - e.g. 1 foot = 304.8mm

Things To Show On Your Drawing:

Ceiling heights. These are very important to allow us to prepare you a quote.

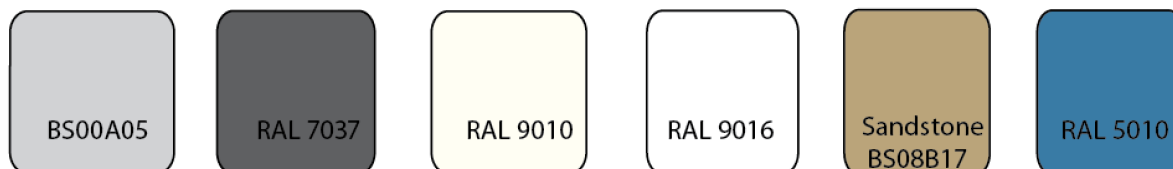
Ceiling light positions. Do the proposed partitions fall in line with ceiling or wall mounted light or air conditioning fittings?

Trunking. Is there dado or skirting trunking on the walls?

Power and data points. Do they fall into the right rooms after the partitions have been installed?

Windows. We are able to place partitions down the centre of a window, it is best if it falls on one of the mullions. Please let us know the width of the mullion.

Standard Colours For The Partitions:



Sample colour swatches are available on request.

Other Points To Consider:

If you could also provide us with information on the following, it would help us to quote for your partitions more accurately:

Installation level (e.g. ground floor, first floor etc.)

Is there a lift to assist with moving materials?

Is the area clear with good access from the entrance etc.?

Do you have offloading facilities on site (e.g. fork lift truck etc.)

Do you have a skip or a facility to take the waste materials?